

# CLUTCH FACING SUMMARY T1000



Material Description

Material properties: *Synthetic water resin bonded material without lead, With a low density, good wear and comfort behavior.*

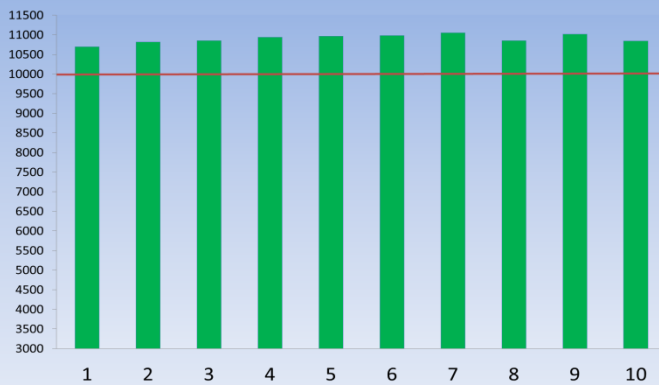
Color :  *brown.*

Max. Production size :  $\varnothing$  430 (mm).

Density :  $1.65 \text{ (g/cm}^3\text{)}$ .

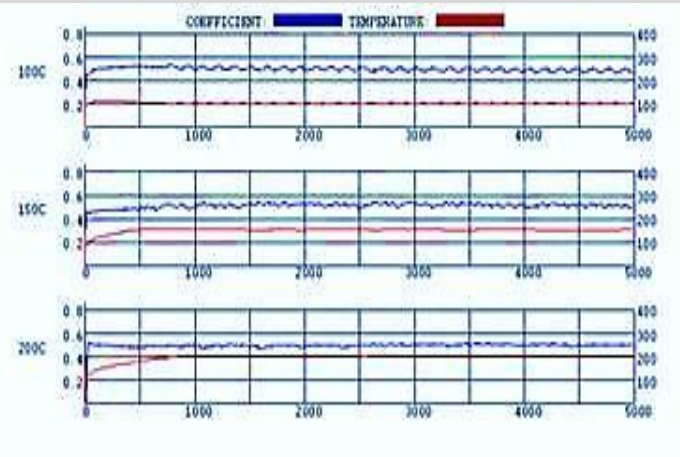


Burst-Strength-Test



Minimum **10700** [rpm]  
 Average **10902** [rpm]  
 Maximum **11050** [rpm]  
 Standard Deviation **107.89**[rpm]  
 SD / Average **1%**

Friction-JIS D4411



Functional wear  $(\text{cm}^3/\text{Nm})10^{-7}$

At 100°C 0.5max:  **$0.164(\text{cm}^3/\text{Nm})10^{-7}$**

At 150°C 0.75max :  **$0.075(\text{cm}^3/\text{Nm})10^{-7}$**

Functional friction

At 100°C 0.25 - 0.60 : **0.488**

At 150°C 0.20 - 0.60 : **0.514**

Judder-Test

